

Military, Aerospace and Government Business Unit



Product Information

The MAG-2712 provides a fully managed automatic link backup capability for up to twelve (12) "mission-critical" 1000Base T/100Base Tx/10BaseT/1000BaseF Ethernet links. The system protects vital connections to servers, routers, firewalls, and other key Ethernet devices that require fail safe link operation. The MAG-2700 operates by monitoring a "primary" link and, in the event of a failure, automatically switches to the backup link; or switching can be controlled externally via SNMP, RS232, Telnet, or front panel commands. The unit combines both chip and relay technologies to provide fast switchover and continuous traffic on loss of power using "straight through wire"™ technology. The MAG-2700 is housed in a 2U card cage chassis and designed to be mounted in a standard 19" datacom/telecom rack.

Applications

- Provide automatic backup for critical 10BaseT/100BaseTx/1000BaseT/1000BaseF Links to servers, routers, and other vital equipment
- Protect attached equipment from failures of primary link due to cable cuts, disconnected cables, and hub failures (malfunctioning ports, plug-in-cards, or power supplies)
- Provide immediate notification via SNMP of link failures
- Control network configuration/topology via SNMP scripts
- Simplify network maintenance thru forced switching to hot standby

Port Features

- Automatic switching to backup on loss of service
- Automatic switch-back to primary on restoration of service
- Alarm notification via SNMP traps
- Default connection to primary link on loss of power
- Enable/disable of automatic switching
- Capability to force port to backup condition
- Front panel display of link status on primary, backup, and server connections; alarm status; active connection status (primary or backup); port enable/disable status; override status
- Programmable failover times for fast failover
- Programmable switchover delay and restore times

System Features

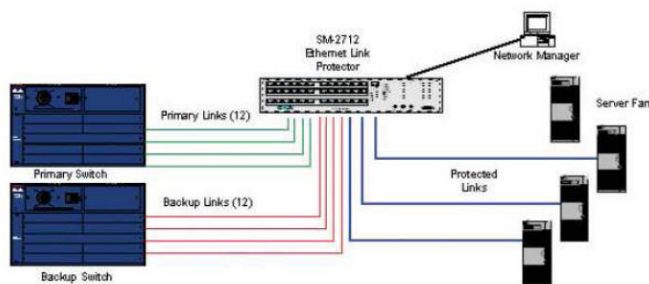
- Provides and manages redundant connections for up to 12 copper and/or fiber Ethernet
- Automatic switching to backup on loss of service
- Automatic switch-back to primary link on restoration of service
- Alarm on loss primary, backup to primary link on restoration of service
- Telnet access for control, status, setup information
- Protocol support: Bootp, NMP, ICMP, ARP, TCP, IP, TFTP
- SNMP Trap message on link failure alarms
- Forced switchover to backup, port enable/disable, and alarm acknowledgement functions available through SNMP, RS232, Telnet and front panel switches
- Port groups
- LED indicators for transmit, receive, and link status for 10BaseT management port
- System configuration and firmware stored in on-volatile upgradable EEPROM
- RS-232 console interface (300 x 38.4k bps) for system configuration
- Programmable password protection
- 110/220v 50/60hz 110/400hz auto sending redundant hot swappable power supplies

Specifications

- Standard: IEEE 802.3 1000BaseSX/1000BaseT / 100BASETx/10BaseT compliant, IEEE 802.3u 1000BaseFx compliant
- Connectors: 3 RJ45 twisted pair per each copper port card, 3 LC fiber pair per each fiber port card, 1 RJ45 10BaseT management port, 2 4-wire 110/ AC power (150w)

Dimensions

- 3.5" high x 15.0" deep x 19.0" wide



SVTRONICS, INC.
www.svtronics.com

